

RACCORDO PORTAGOMMA TIPO "ROMA" IN OTTONE CW 617 N / UNI EN 12165  
BRASS CW 617 N / UNI EN 12165 HOSE UNION "ROMA" TYPE

**DECRETO LEGISLATIVO 25/02/2000 N° 93**  
il prodotto illustrato nella presente scheda tecnica soddisfa i requisiti della direttiva PED 97/23/CE ed e' esentato dalla marcatura CE in base all'art.3 par. 3.

**DECREE LAW DD. 25/02/2000 NO.93**  
the product showed in this technical sheet is made According to PED 97/23/CE and it is CE marking-free as per art. 3 par.3.



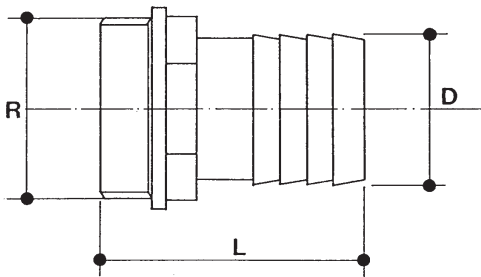
**853**



**854**

DIMENSIONI PRINCIPALI

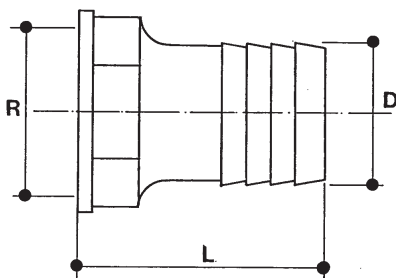
LEADING DIMENSIONS



R"	X	D	L
1/8	6	31	
1/8	8	32	
1/8	10	32	
1/4	6	33	
1/4	8	33	
1/4	10	33	
1/4	13	33	
3/8	10	35	
3/8	13	37	
3/8	15	40	
1/2	10	39	
1/2	13	40	
1/2	15	41	
1/2	16	42	
1/2	18	43	
1/2	20	44	

R"	X	D	L
3/4	13	46	
3/4	16	49	
3/4	18	48	
3/4	20	49	
3/4	22	49	
3/4	25	52	
1	20	49	
1	25	55	
1	27	56	
1	30	56	
1	32	55	
1 1/4	30	60	
1 1/4	32	60	
1 1/4	35	60	
1 1/4	39	67	
1 1/4	40	67	

R"	X	D	L
1 1/2	38	65	
1 1/2	40	67	
1 1/2	45	74	
1 1/2	50	70	
2	50	72	
2	51	72	
2	60	84	
2 1/2	60	95	
2 1/2	63	91	
2 1/2	70	101	
3	76	98	
3	80	103	
4	100	123	
4	102	123	
-	-	-	
-	-	-	



R"	X	D	L
1/8	8	32	
1/8	10	32	
1/4	10	32	
1/4	13	33,5	
3/8	10	36	
3/8	13	38	
3/8	15	38	

R"	X	D	L
1/2	10	39	
1/2	13	39	
1/2	15	39	
1/2	18	39	
3/4	20	44	
3/4	25	45	
1	25	52	

R"	X	D	L
1	30	52	
1 1/4	30	55	
1 1/4	32	55	
1 1/4	35	58	
1 1/2	40	60	
2	50	77	
-	-	-	